

**NOTES**

Dimensions are not to be scaled.  
 - The drawings shall be prepared by all dimensions, details, specifications & site conditions & shall report any variation or anomaly to the Campus Designer before commencement of work.  
 - For construction purposes, the dimensions shall not be measured directly of the drawings. The drawings shall not be used for construction until they are issued for construction.  
 - These drawings are to be read in co-ordination with HVAC, Electrical, plumbing drawings & all relevant sections of specifications.  
 - All shop drawings should be provided to the Campus Designer for approval.

**AREA CALCULATION**

**GROUND FLOOR AREA = A**  
 = (5.65x15.66)  
 = 88.48 SqM

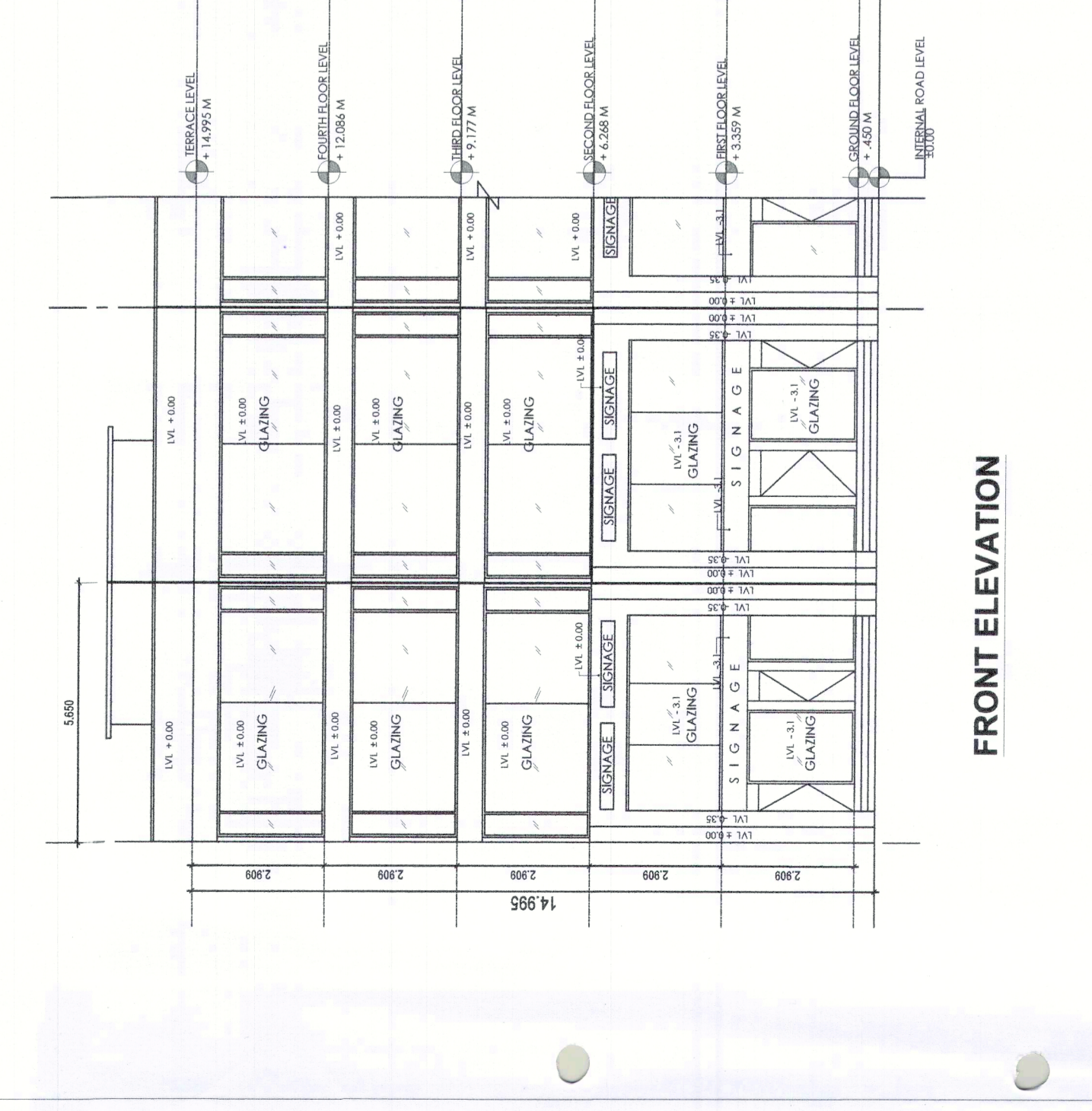
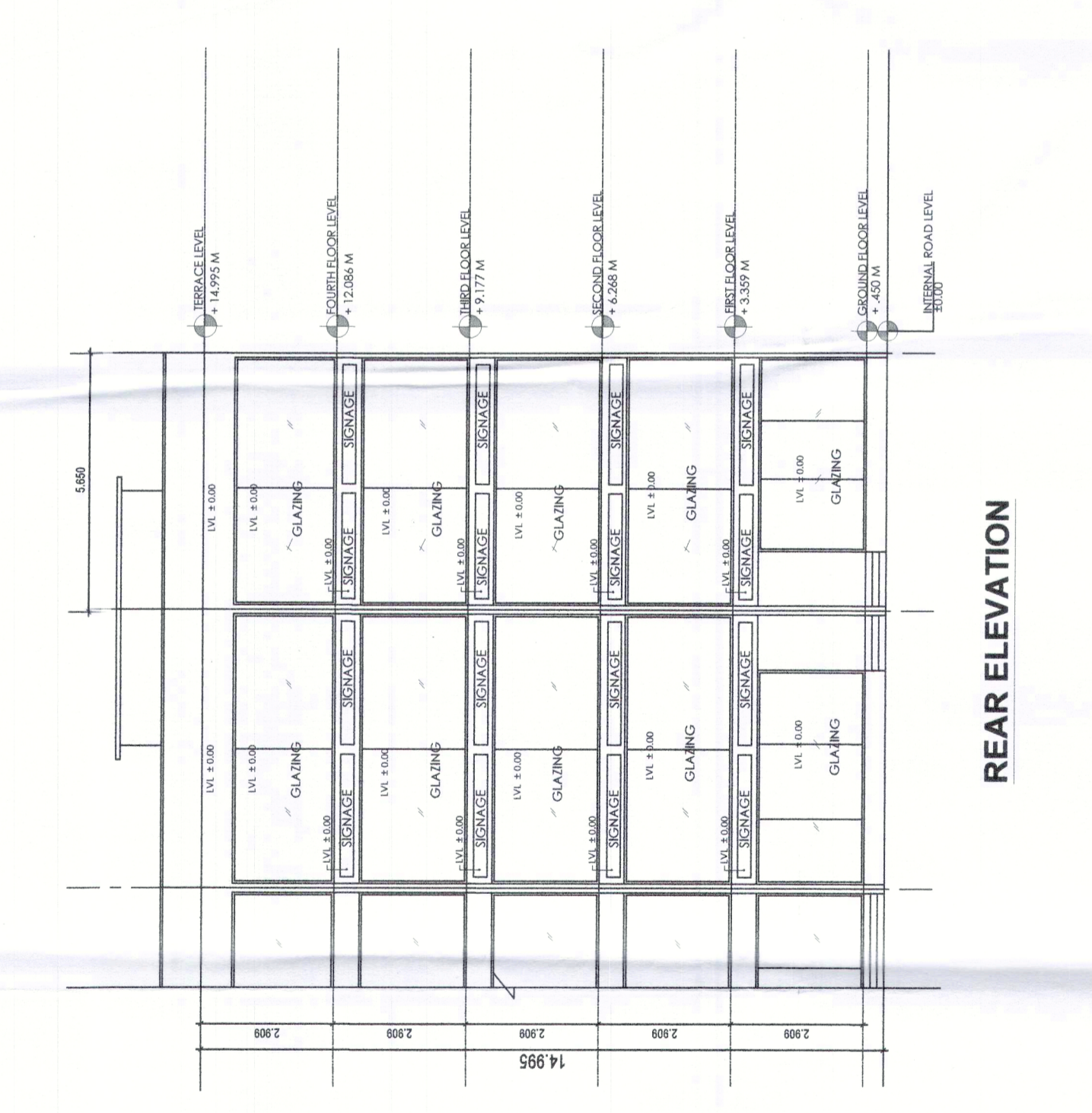
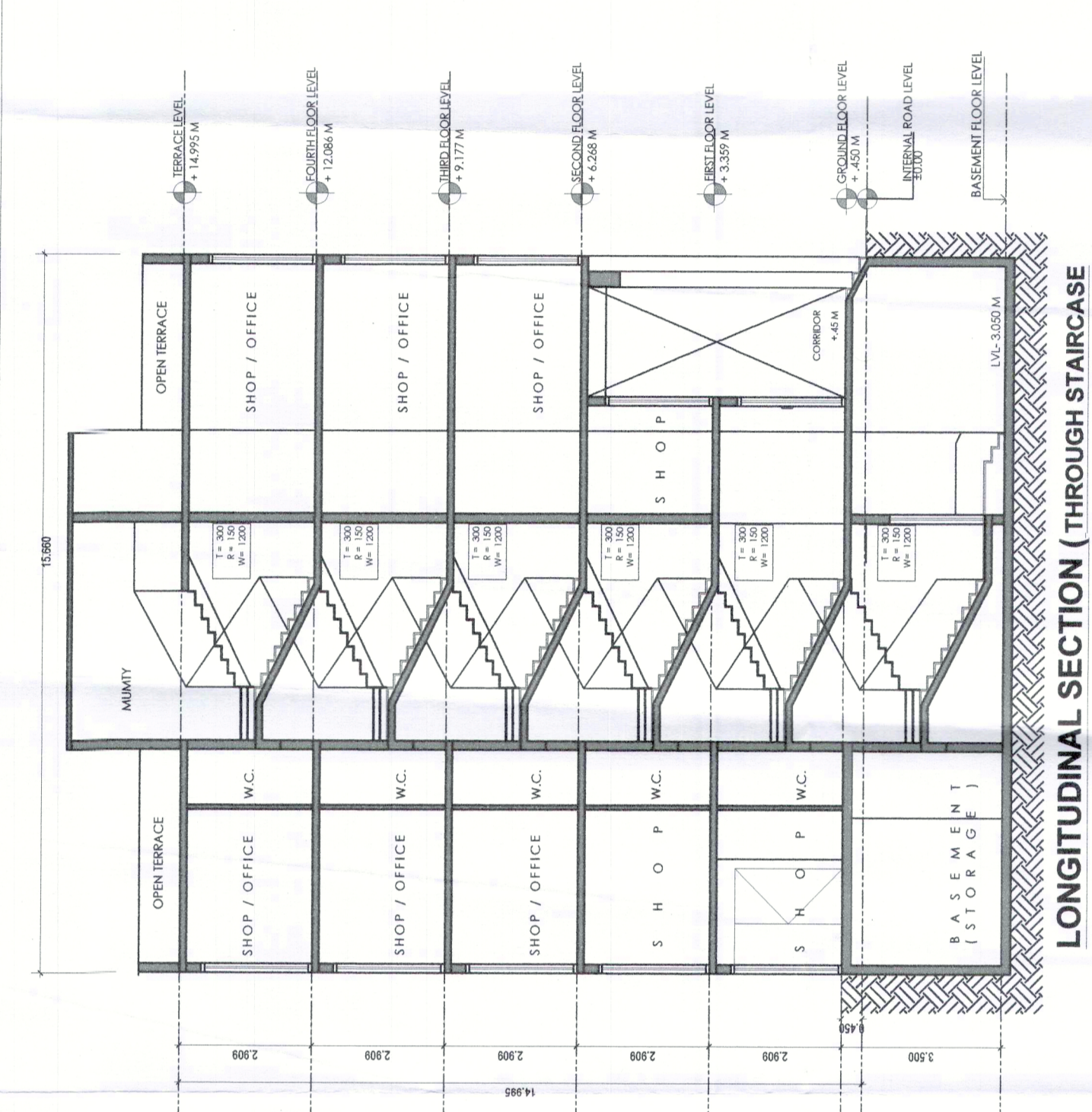
**FIRST FLOOR = E - (B + C + D) + (1.6x1.55) + (1.20x.60)**  
 = (5.65x12.56) - (4.8x2.8) + (1.6x1.55) + (1.20x.60)  
 = 70.96 - 13.44 + 2.48 + 0.72  
 = 54.32 SqM

**SECOND FLOOR = A - (B + C + D)**  
 = (5.65x15.66) - (4.8x2.8) + (1.6x1.55) + (1.20x.60)  
 = 88.48 - (13.44 + 2.48 + 0.72)  
 = 88.48 - 16.64  
 = 71.84 SqM

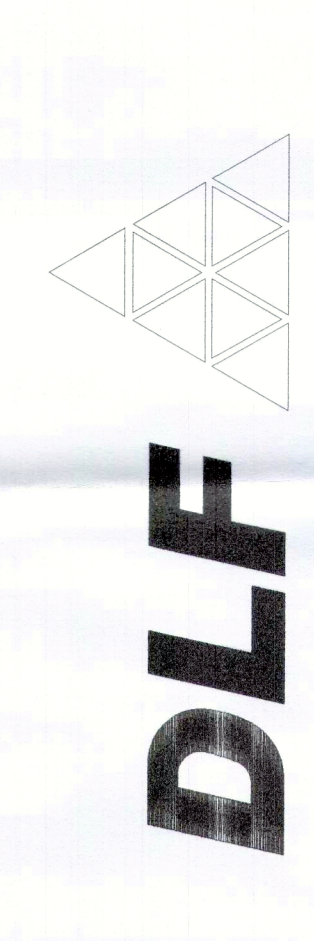
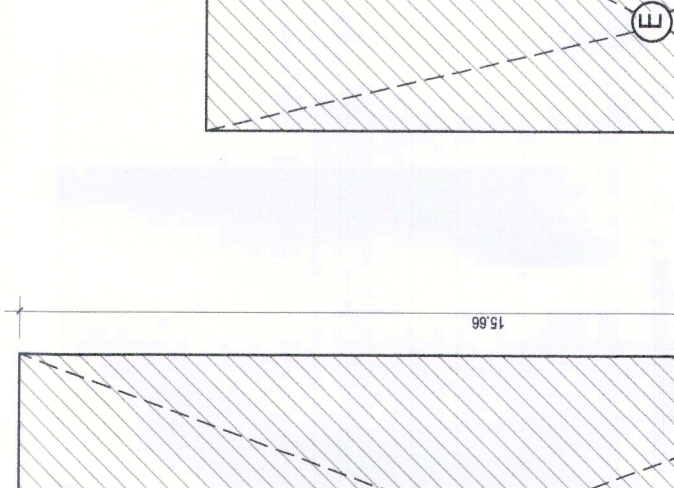
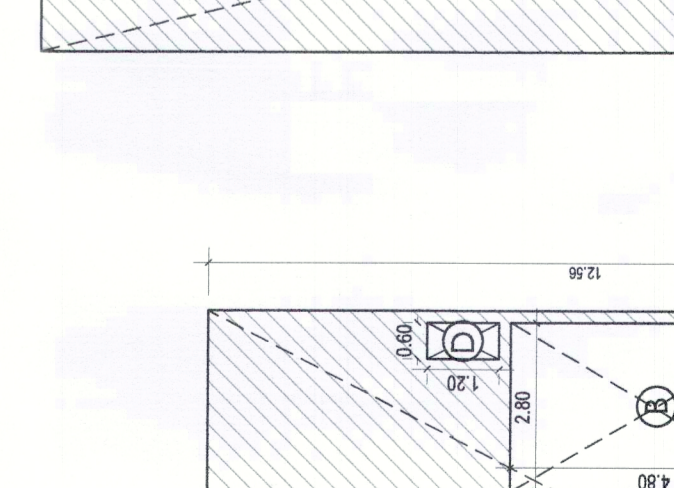
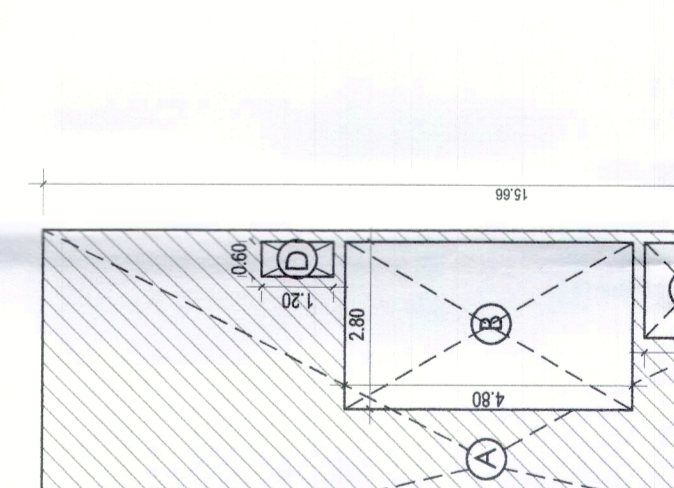
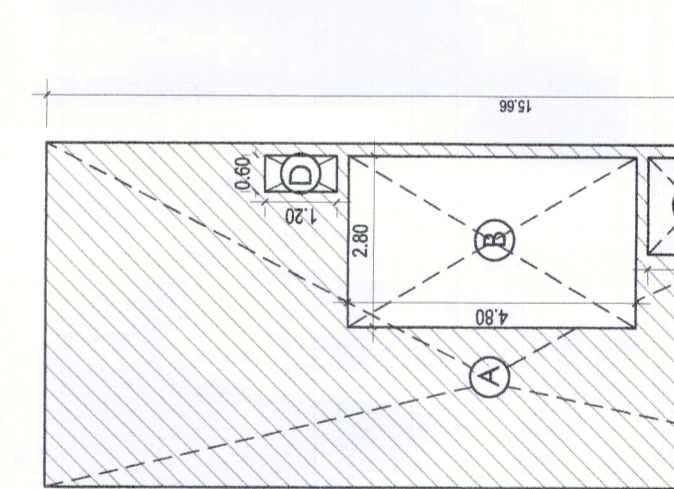
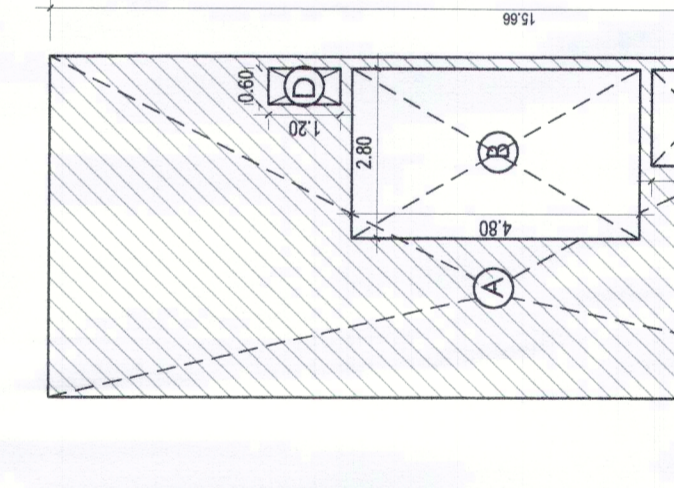
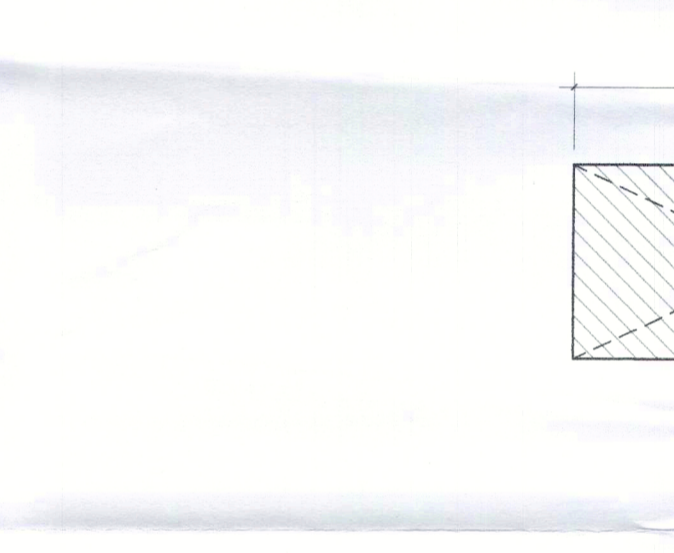
**THIRD FLOOR = A - (B + C + D)**  
 = (5.65x15.66) - (4.8x2.8) + (1.6x1.55) + (1.20x.60)  
 = 88.48 - (13.44 + 2.48 + 0.72)  
 = 88.48 - 16.64  
 = 71.84 SqM

**FOURTH FLOOR = A - (B + C + D)**  
 = (5.65x15.66) - (4.8x2.8) + (1.6x1.55) + (1.20x.60)  
 = 88.48 - (13.44 + 2.48 + 0.72)  
 = 88.48 - 16.64  
 = 71.84 SqM

**TOTAL FAR AREA PER PLOT = 358.32 SqM**



FLOOR	WIDTH (M)	DEPTH (M)	PLOT AREA (SQM)	DEDUCTION (LIFT, STAIRCASE, SHAFT) (SQM)	FAR AREA (SQM)	FAR AREA (SQ YRDS)
GROUND FLOOR	5.65	15.66	88.48		88.48	105.821
FIRST FLOOR	5.65	12.56	70.96	16.64	54.32	64.972
SECOND FLOOR	5.65	15.66	88.48	16.64	71.84	85.919
THIRD FLOOR	5.65	15.66	88.48	16.64	71.84	85.919
FOURTH FLOOR	5.65	15.66	88.48	16.64	71.84	85.919
<b>FAR PER PLOT</b>					<b>358.32</b>	<b>428.55</b>
<b>TOTAL FAR OF THE PLOTS (1 NOS.)</b>					<b>358.32</b>	<b>428.55</b>



**DLF HOME DEVELOPERS LTD.**

**PROJECT TITLE**  
 SCO AT SECTOR 84, GURUGRAM

DATE	REVISION	DESCRIPTION

**ARCHITECT**  
 ARCHITECTS PVT. LTD.  
 A-15, Pamphol Enclave, G.K. I  
 New Delhi 110048  
 Phone: 011-26440550

**STRUCTURE CONSULTANTS:**

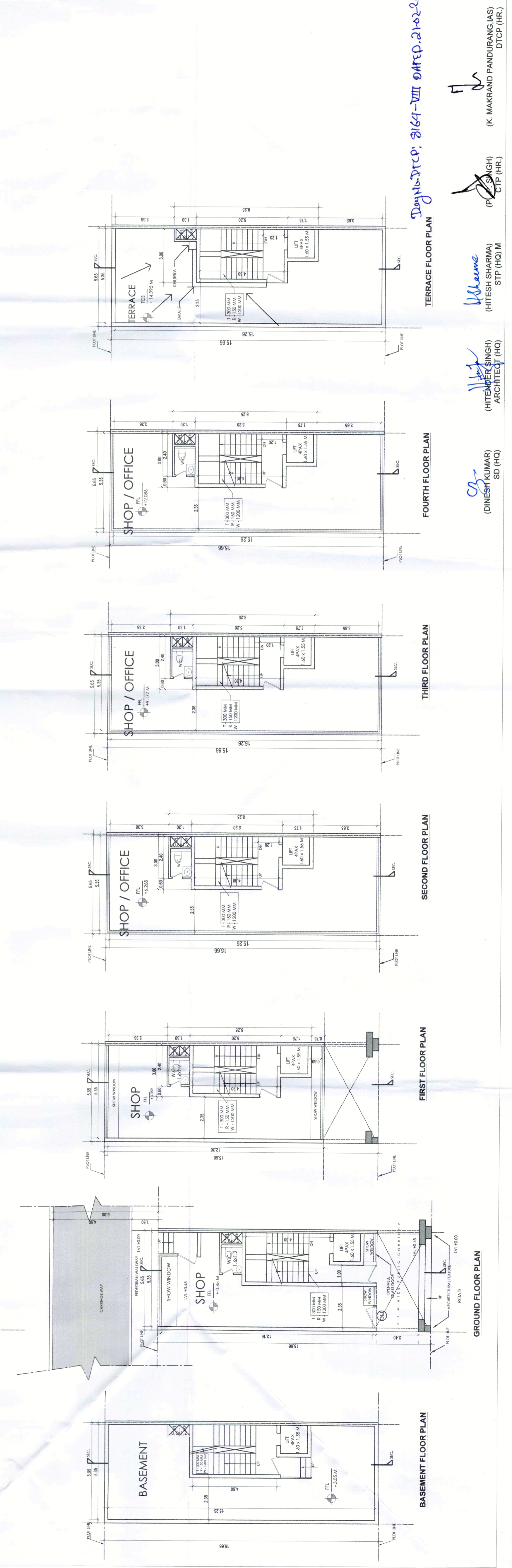
**MEP CONSULTANTS:**

**AUTHORIZED SIGNATORY:-**  
 ARCHITECT'S SIGNATURE:  
 SHEET TITLE

**SCO TYPE B (08)**  
 PLAN, AREA DIAGRAM, ELEVATIONS

**SUBMISSION DRAWING**  
 Document Release Type

Job No.	Scale	Date	Drawn by	Checked by
	1:125 ON A1 SHEET	10 DEC 2021	SD	Jsk



**DATE**  
 21-02-2022

**ARCHITECT**  
 (HITESH SINGH)  
 ARCHITECT (HO)

**ARCHITECT**  
 (DINESH KUMAR)  
 SD (HO)

**ARCHITECT**  
 (K. MAKRAND PANDURANG IAS)  
 DTCP (HR.)

**ARCHITECT**  
 (K. MAKRAND PANDURANG IAS)  
 DTCP (HR.)

**ARCHITECT**  
 (K. MAKRAND PANDURANG IAS)  
 DTCP (HR.)

**ARCHITECT**  
 (K. MAKRAND PANDURANG IAS)  
 DTCP (HR.)

**ARCHITECT**  
 (K. MAKRAND PANDURANG IAS)  
 DTCP (HR.)