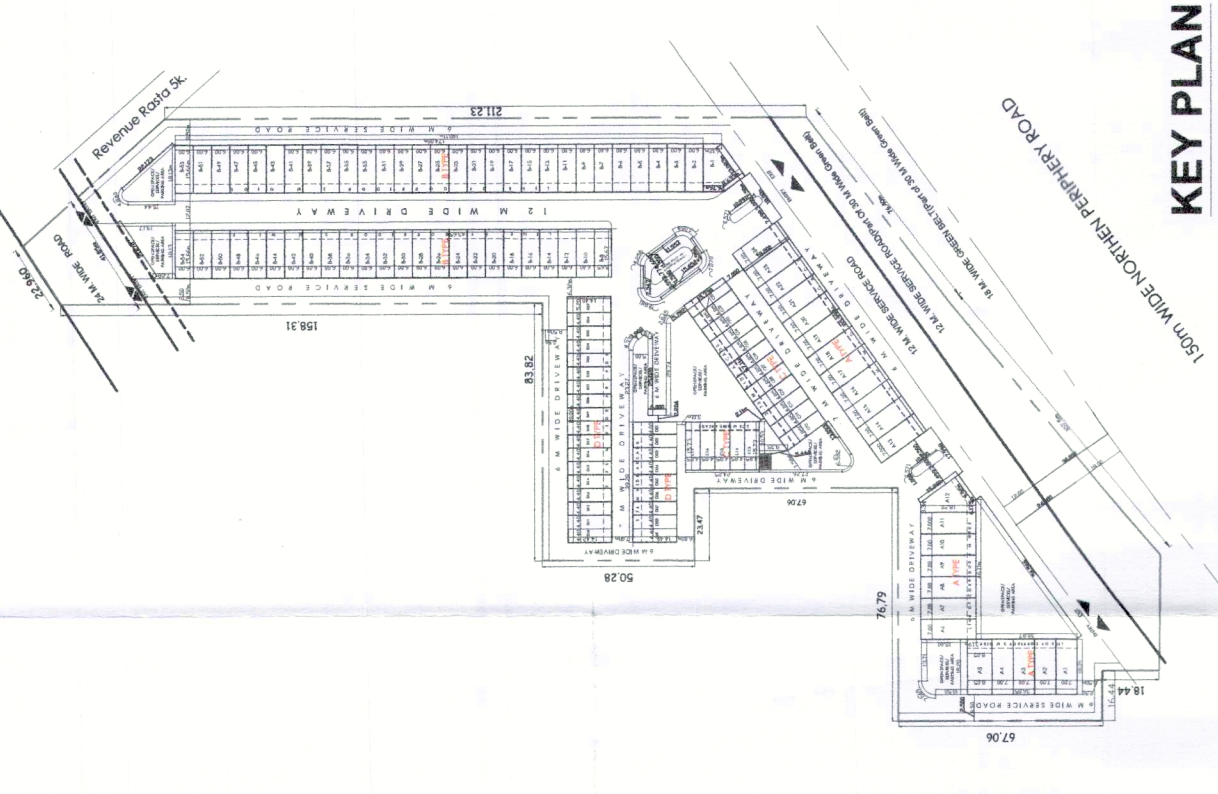
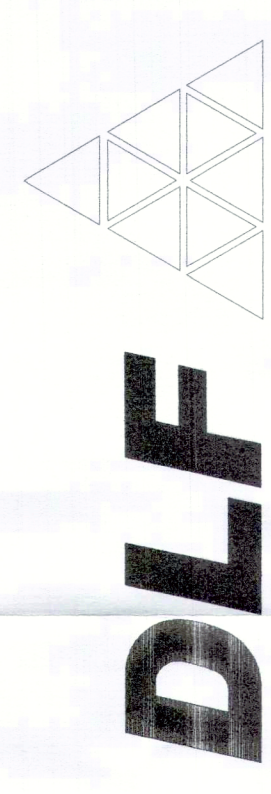


NOTES

- Dimensions are not to be scaled.
- The contractor shall verify all dimensions, details, specifications & site conditions & shall report any error, omission and/or anomaly to the Campus Designer before commencement of work.
- For construction purposes, the dimensions shall not be measured directly of the drawings. The dimensions shall not be used for construction until they are issued for construction.
- These drawings are to be read in co-ordination with HVAC, Electrical, plumbing drawings & all relevant sections of specifications.
- All shop drawings should be provided to the Campus Designer for approval.



KEY PLAN



DLF HOME DEVELOPERS LTD.

PROJECT TITLE
SCO AT SECTOR 84, GURUGRAM

DATE	REVISION DESCRIPTION	ISSUES

ARCHITECT:
ARCOP ASSOCIATES PVT. LTD.
A-15, Parnipat Enclave, C.K. 1
Sector 15, Gurgaon, Haryana
Phone: 011-2842050

STRUCTURE CONSULTANTS:

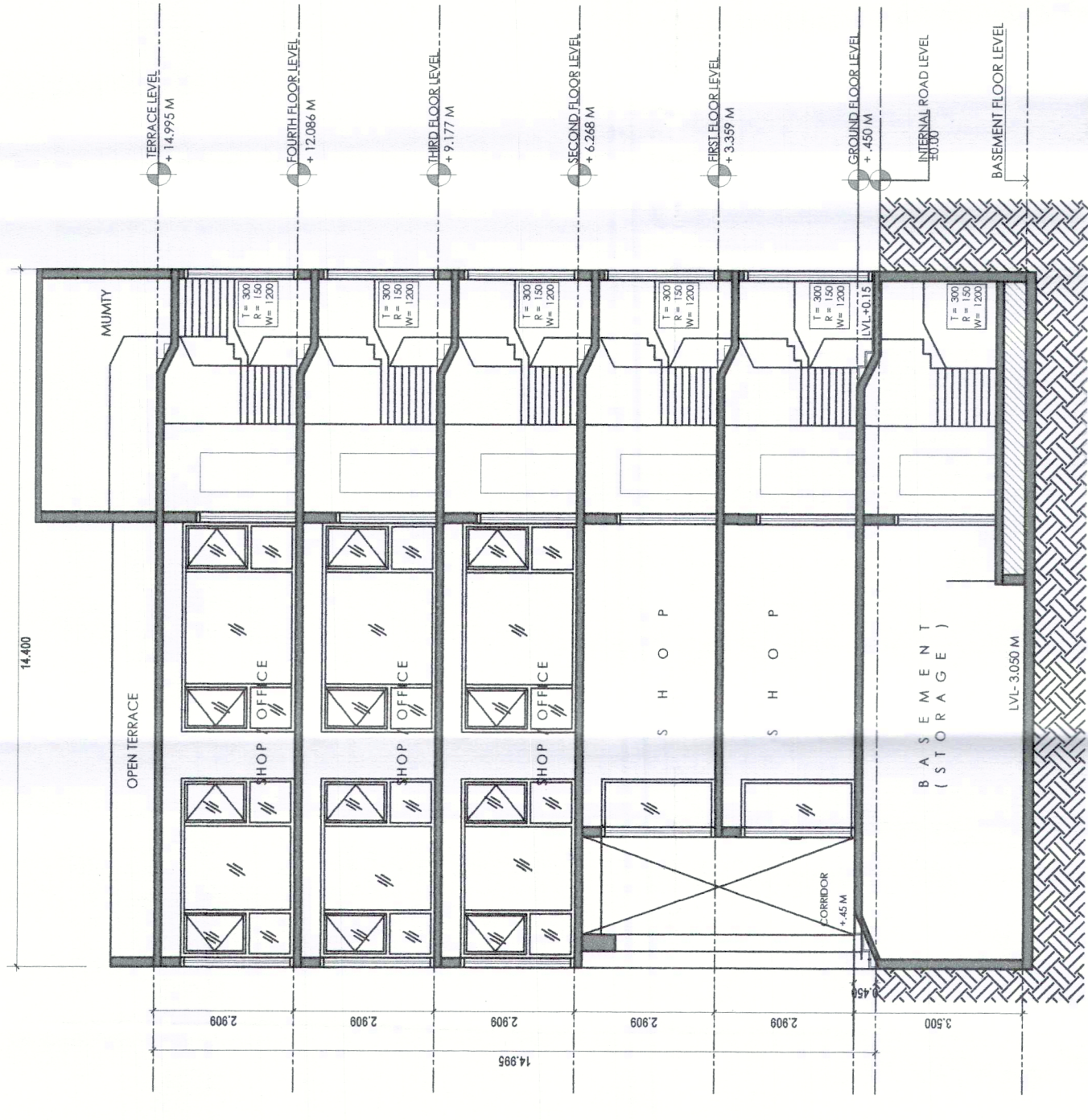
MEP CONSULTANTS:

AUTHORIZED SIGNATORY:- ARCHITECT'S SIGNATURE:-
[Signature]

SHEET TITLE
**SCO TYPE D (CORNER PLOT)
PLAN, AREA DIAGRAM, ELEVATIONS**

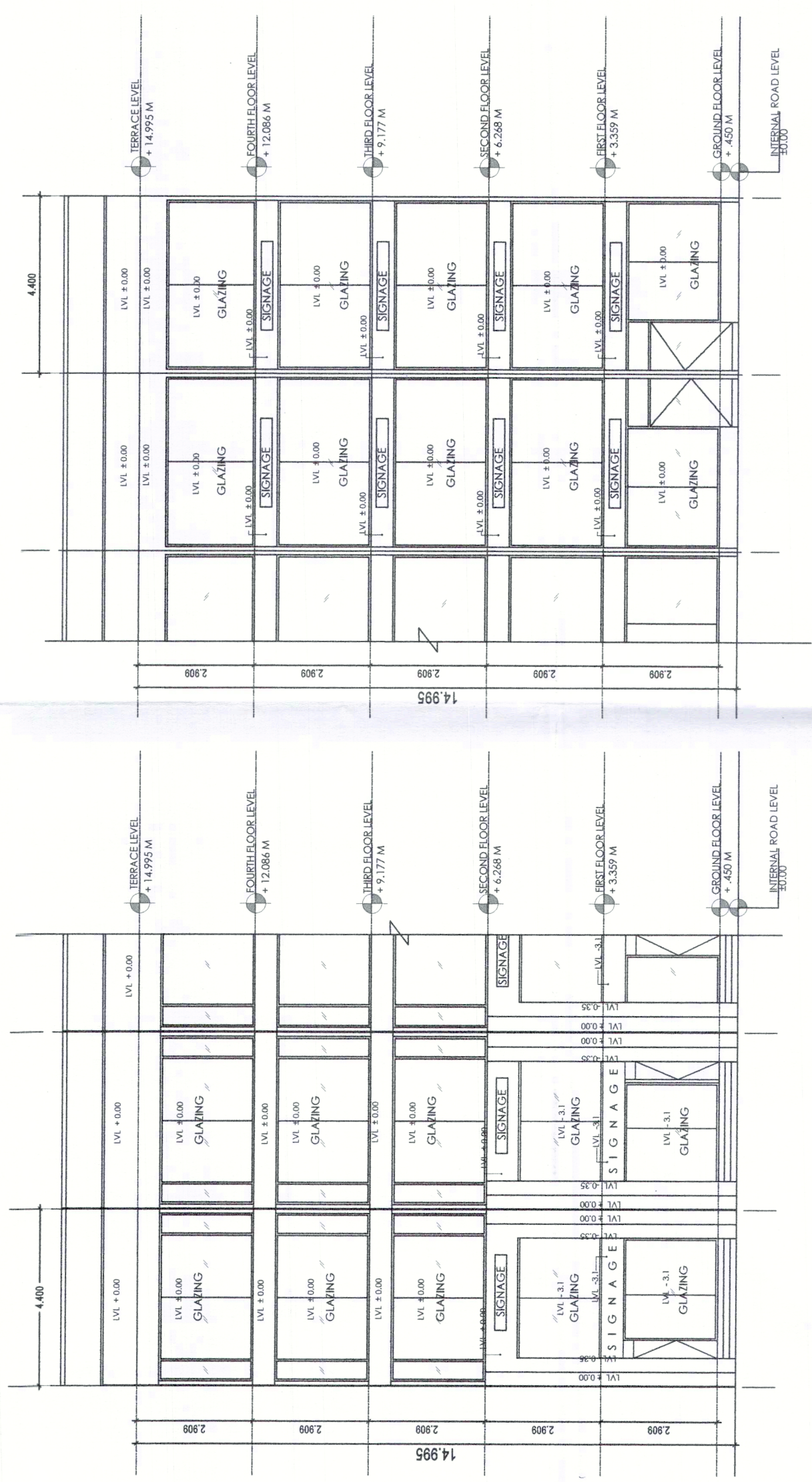
Document Release Type
SUBMISSION DRAWING

Job No.	
Scale	1:125 ON A1 SHEET
Date	10 DEC, 2021
Drawn by	SD
Checked by	Jsk
Drawing Number	AR-84-TYPE D-COR
Revision No.	

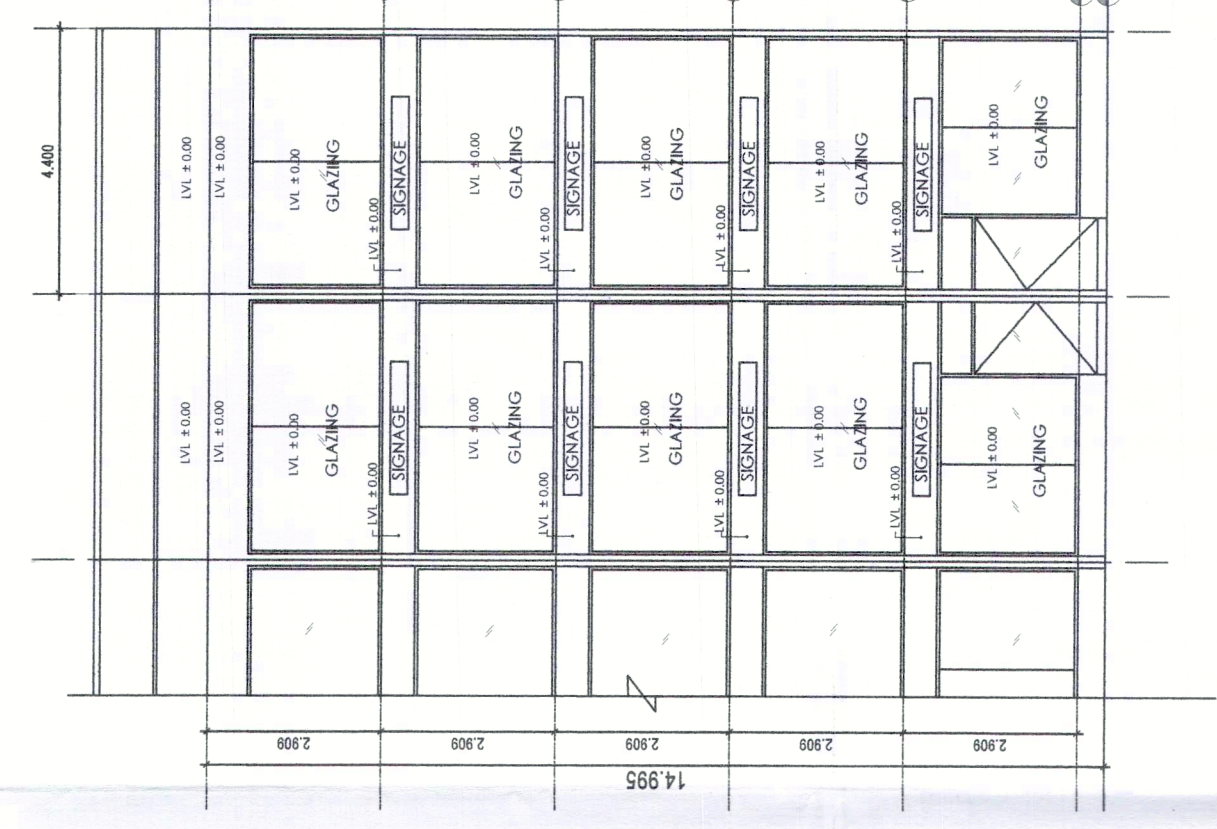


LONGITUDINAL SECTION (THROUGH STAIRCASE)

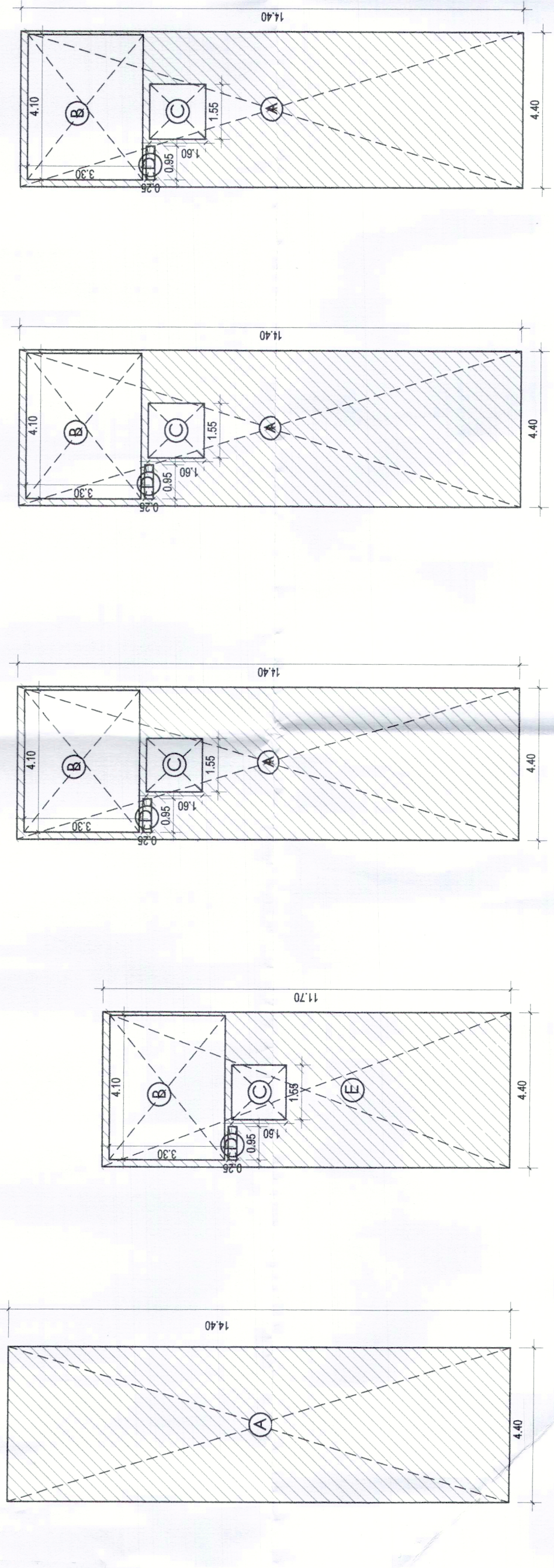
FLOOR	WIDTH (M)	DEPTH (M)	PLOT AREA (SQM)	DEDUCTION (LIFT, STAIRCASE, SHAFT) (SQM)	FAR AREA (SQM)	FAR AREA (SQ YRDS)
GROUND FLOOR	4.40	14.40	63.36		63.36	75.78
FIRST FLOOR	4.40	11.70	51.48	16.24	35.24	42.15
SECOND FLOOR	4.40	14.40	63.36	16.24	47.12	56.36
THIRD FLOOR	4.40	14.40	63.36	16.24	47.12	56.36
FOURTH FLOOR	4.40	14.40	63.36	16.24	47.12	56.36
FAR PER PLOT					239.96	286.99
TOTAL FAR OF THE PLOTS (2 NOS.)					479.92	573.98



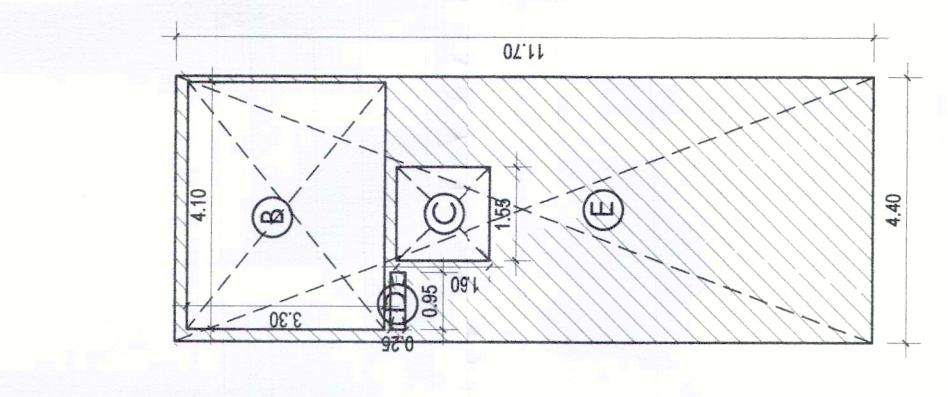
FRONT ELEVATION



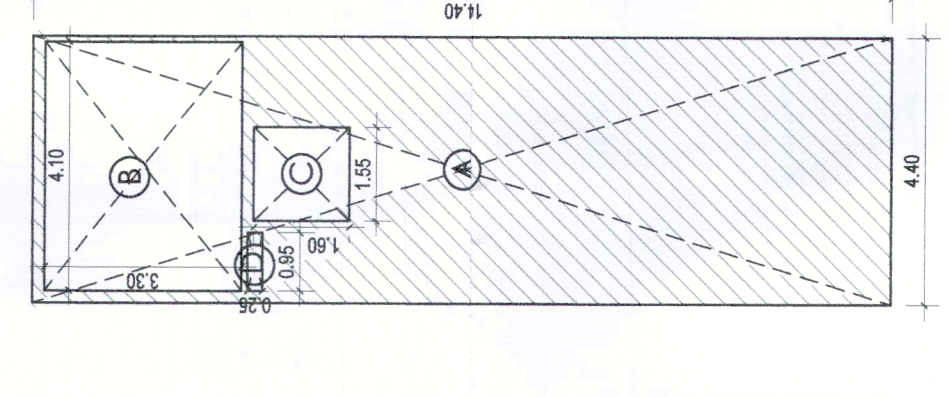
REAR ELEVATION



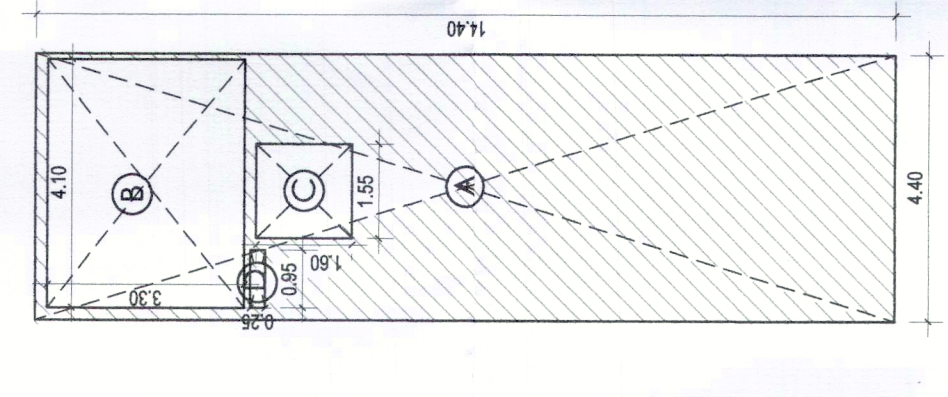
GROUND FLOOR AREA DIAGRAM



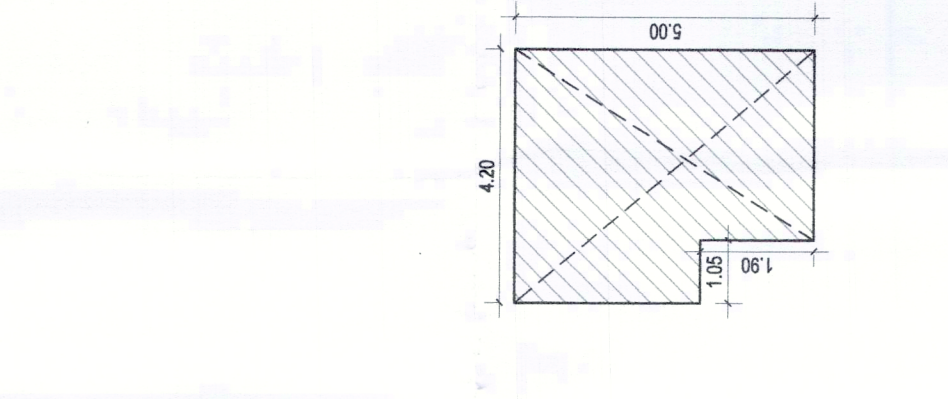
FIRST FLOOR AREA DIAGRAM



SECOND FLOOR AREA DIAGRAM



THIRD FLOOR AREA DIAGRAM



FOURTH FLOOR AREA DIAGRAM

GROUND FLOOR AREA = A = (4.40x14.40) = 63.36 SqM

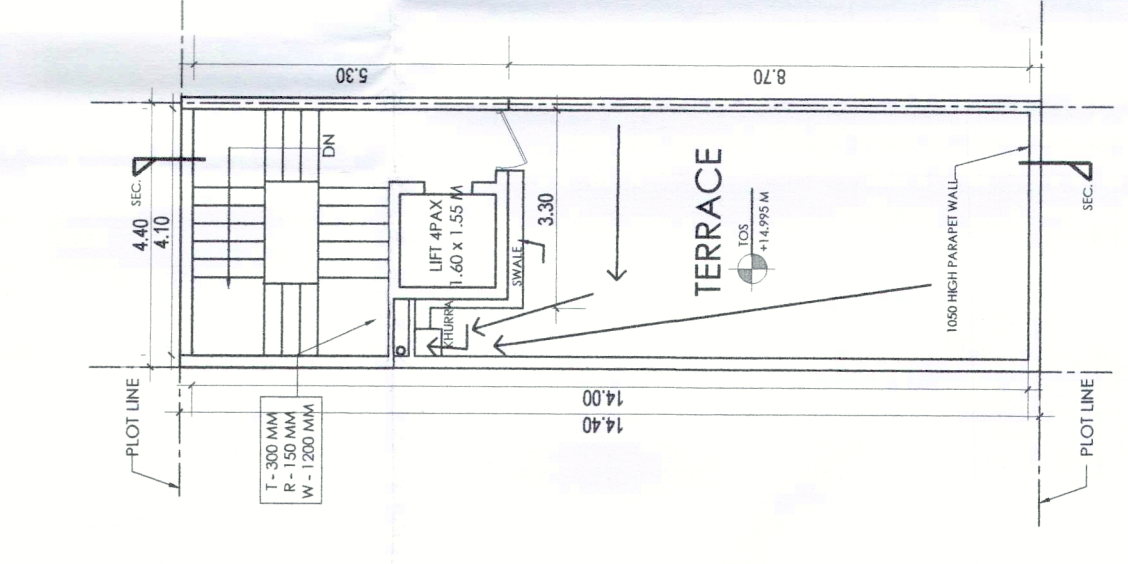
FIRST FLOOR = E - (B + C + D) = (4.40x11.7) - [(4.1x3.3) + (1.6x1.55) + (0.25x0.95)] = 51.48 - (13.53+2.48+0.24) = 51.48 - 16.24 = 35.24 SqM

SECOND FLOOR = A - (B + C + D) = (4.40x14.40) - [(4.1x3.3) + (1.6x1.55) + (0.25x0.95)] = 63.36 - (13.53+2.48+0.24) = 63.36 - 16.24 = 47.12 SqM

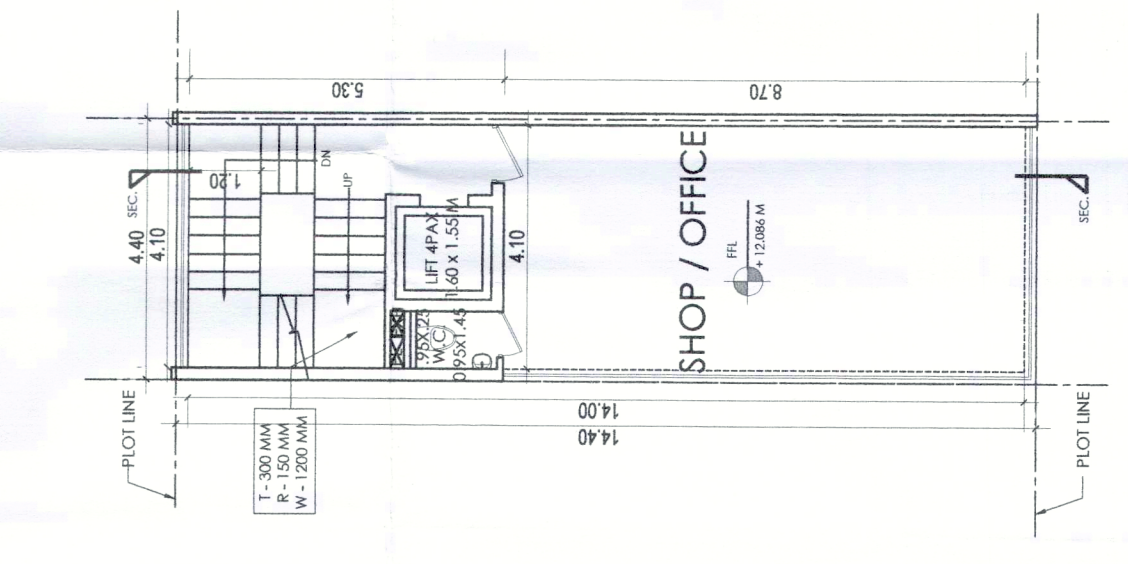
THIRD FLOOR = A - (B + C + D) = (4.40x14.40) - [(4.1x3.3) + (1.6x1.55) + (0.25x0.95)] = 63.36 - (13.53+2.48+0.23) = 63.36 - 16.24 = 47.12 SqM

FOURTH FLOOR = A - (B + C + D) = (4.40x14.40) - [(4.1x3.3) + (1.6x1.55) + (0.25x0.95)] = 63.36 - (13.53+2.48+0.23) = 63.36 - 16.24 = 47.12 SqM

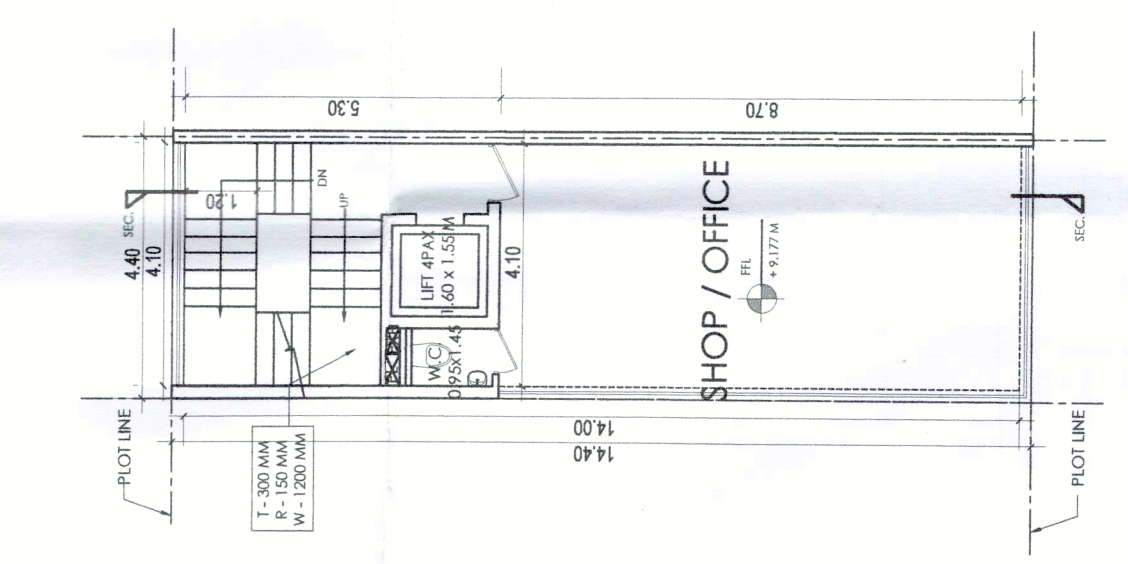
TOTAL FAR AREA PER PLOT = **239.96** SqM



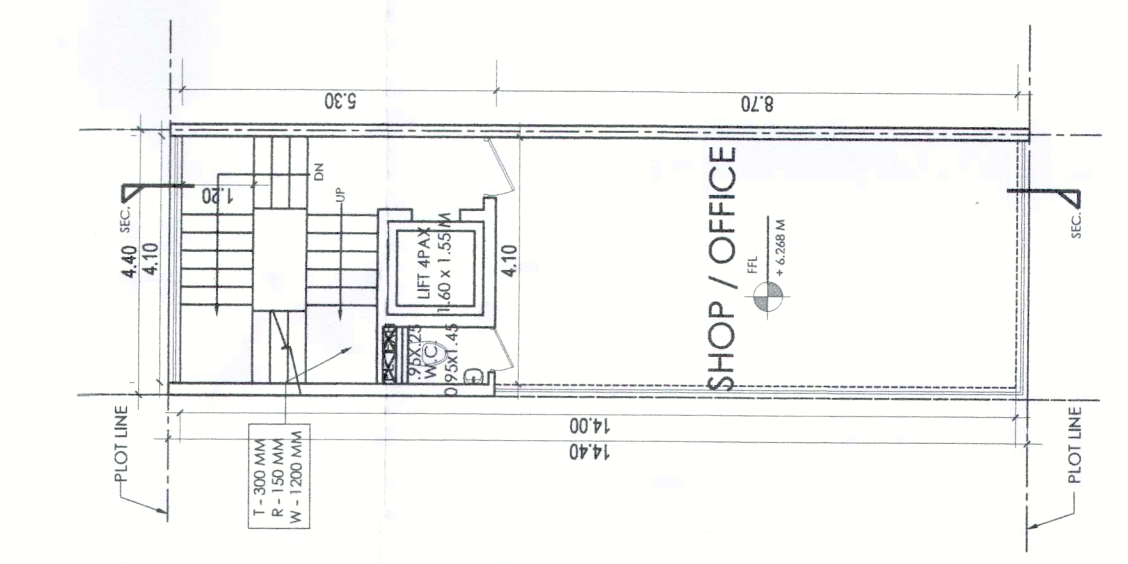
MUMTY FLOOR AREA DIAGRAM



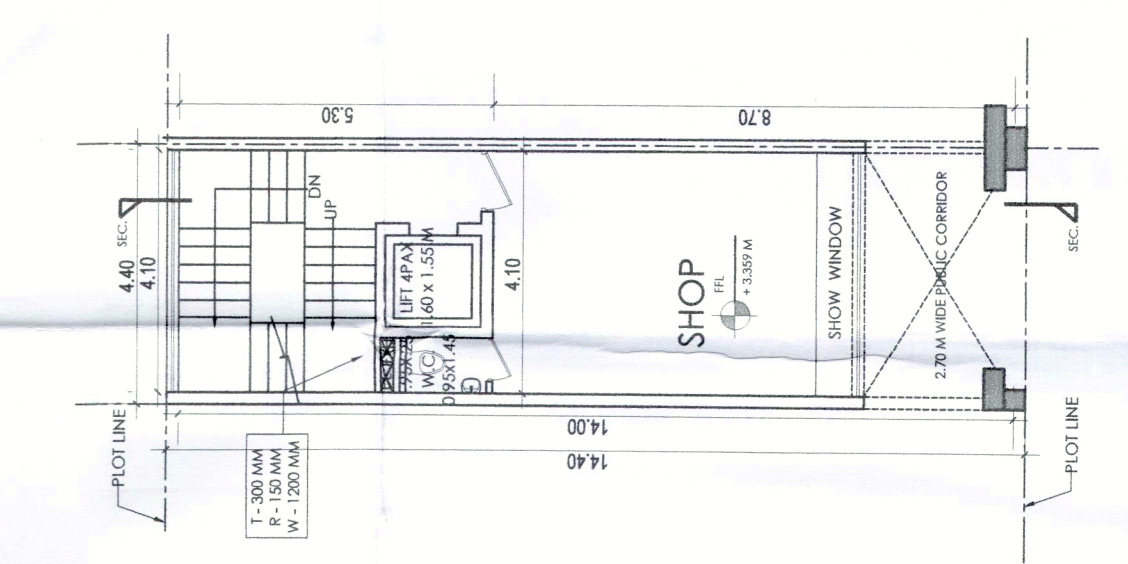
FIRST FLOOR PLAN



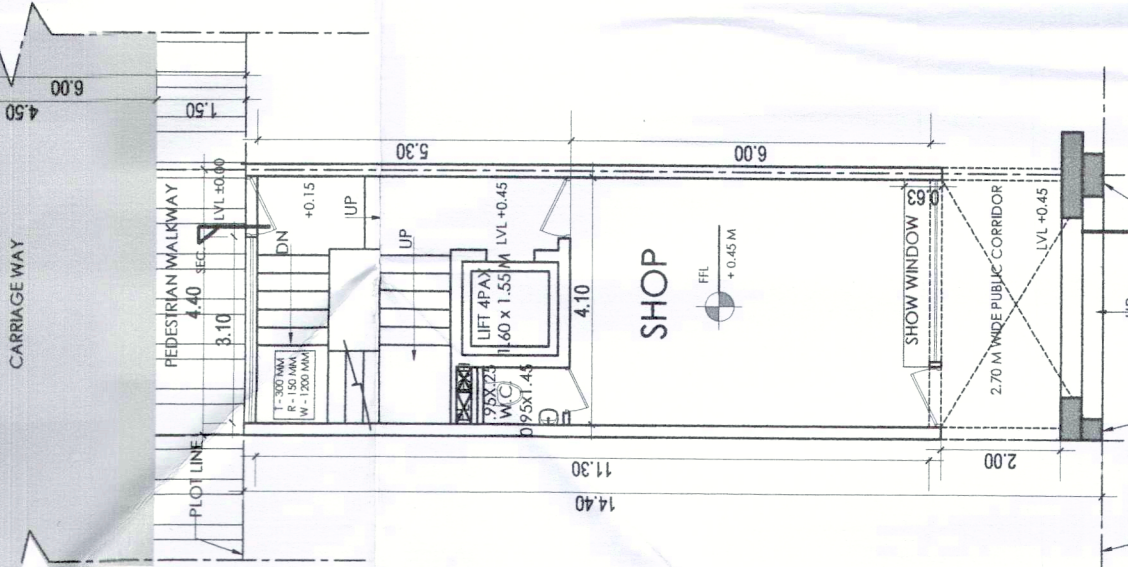
SECOND FLOOR PLAN



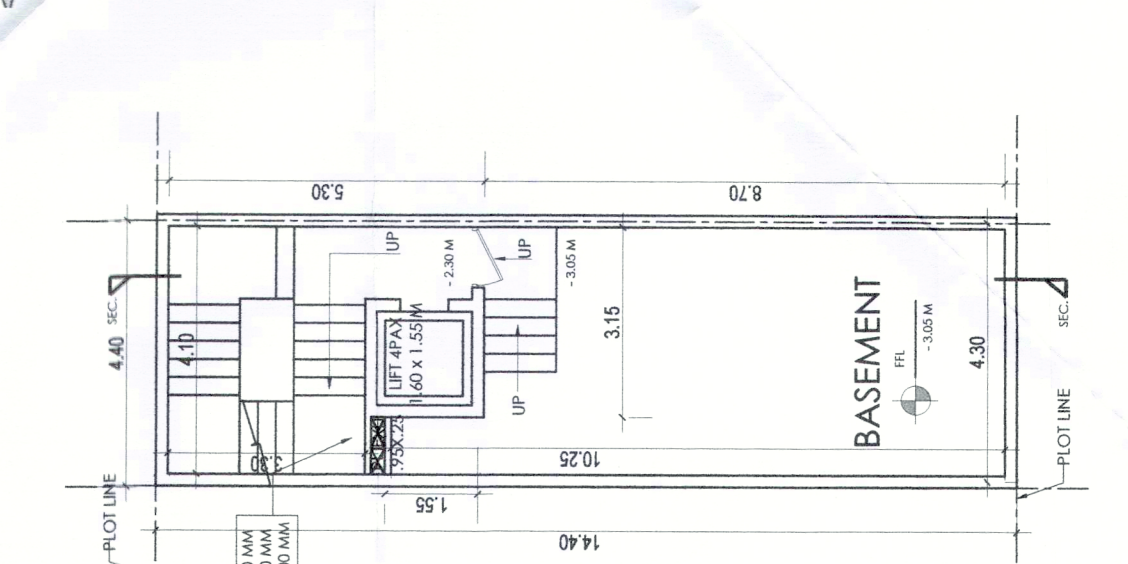
THIRD FLOOR PLAN



FOURTH FLOOR PLAN



TERRACE FLOOR PLAN



BASEMENT FLOOR PLAN

Drafting No. DFC-28164-III DATED: 21-02-2022

Architect: Hitesh Sharma (HITESH SHARMA) STP (HO), M

Architect: Dinesh Kumar (DINESH KUMAR) SD (HO), M

Architect: Himanshu Singh (HIMANSHU SINGH) ARCHITECT (HO)

Architect: K. Manoj Pandurang (K. MANOJ PANDURANG) AS DTCP (PR)