

NOTES

- Dimensions are not to be scaled.
- The contractor shall verify all dimensions, details specifications & site conditions & shall report any error, omission and/or anomaly to the Campus Designer before commencing the work. The contractor shall not be measured directly on the drawings. The drawings shall not be used for construction until they are issued for construction.
- These drawings are to be read in co-ordination with HVAC, Electrical, plumbing drawings & all relevant sections of specifications.
- All shop drawings should be provided to the Campus Designer for approval.

GROUND FLOOR AREA = A
 $= (5.2 \times 14.4)$
 $= 74.88 \text{ SQM}$

FIRST FLOOR = E - (B + C + D)
 $= (5.2 \times 11.7) - (1.4 \times 9.3) - (1.6 \times 1.55) - (0.6 \times 1.5)$
 $= 60.84 - (14.7 \times 2.48 + 0.9)$
 $= 60.84 - 18.08 - 0.9$
 $= 42.76 \text{ SQM}$

SECOND FLOOR = A - (B + C + D)
 $= (5.2 \times 14.4) - (1.4 \times 9.3) - (1.6 \times 1.55) - (0.6 \times 1.5)$
 $= 74.88 - (14.7 \times 2.48 + 0.9)$
 $= 74.88 - 18.08 - 0.9$
 $= 56.8 \text{ SQM}$

THIRD FLOOR = A - (B + C + D)
 $= (5.2 \times 14.4) - (1.4 \times 9.3) - (1.6 \times 1.55) - (0.6 \times 1.5)$
 $= 74.88 - (14.7 \times 2.48 + 0.9)$
 $= 74.88 - 18.08 - 0.9$
 $= 56.8 \text{ SQM}$

FOURTH FLOOR = A - (B + C + D)
 $= (5.2 \times 14.4) - (1.4 \times 9.3) - (1.6 \times 1.55) - (0.6 \times 1.5)$
 $= 74.88 - (14.7 \times 2.48 + 0.9)$
 $= 74.88 - 18.08 - 0.9$
 $= 56.8 \text{ SQM}$

TOTAL FAR AREA PER PLOT = **288.04 Sqm**

GROUND FLOOR AREA = A
 $= (5.2 \times 14.4)$
 $= 74.88 \text{ SQM}$

FIRST FLOOR = E - (B + C + D)
 $= (5.2 \times 11.7) - (1.4 \times 9.3) - (1.6 \times 1.55) - (0.6 \times 1.5)$
 $= 60.84 - (14.7 \times 2.48 + 0.9)$
 $= 60.84 - 18.08 - 0.9$
 $= 42.76 \text{ SQM}$

SECOND FLOOR = A - (B + C + D)
 $= (5.2 \times 14.4) - (1.4 \times 9.3) - (1.6 \times 1.55) - (0.6 \times 1.5)$
 $= 74.88 - (14.7 \times 2.48 + 0.9)$
 $= 74.88 - 18.08 - 0.9$
 $= 56.8 \text{ SQM}$

THIRD FLOOR = A - (B + C + D)
 $= (5.2 \times 14.4) - (1.4 \times 9.3) - (1.6 \times 1.55) - (0.6 \times 1.5)$
 $= 74.88 - (14.7 \times 2.48 + 0.9)$
 $= 74.88 - 18.08 - 0.9$
 $= 56.8 \text{ SQM}$

FOURTH FLOOR = A - (B + C + D)
 $= (5.2 \times 14.4) - (1.4 \times 9.3) - (1.6 \times 1.55) - (0.6 \times 1.5)$
 $= 74.88 - (14.7 \times 2.48 + 0.9)$
 $= 74.88 - 18.08 - 0.9$
 $= 56.8 \text{ SQM}$

TOTAL FAR AREA PER PLOT = **288.04 Sqm**

GROUND FLOOR AREA = A
 $= (5.2 \times 14.4)$
 $= 74.88 \text{ SQM}$

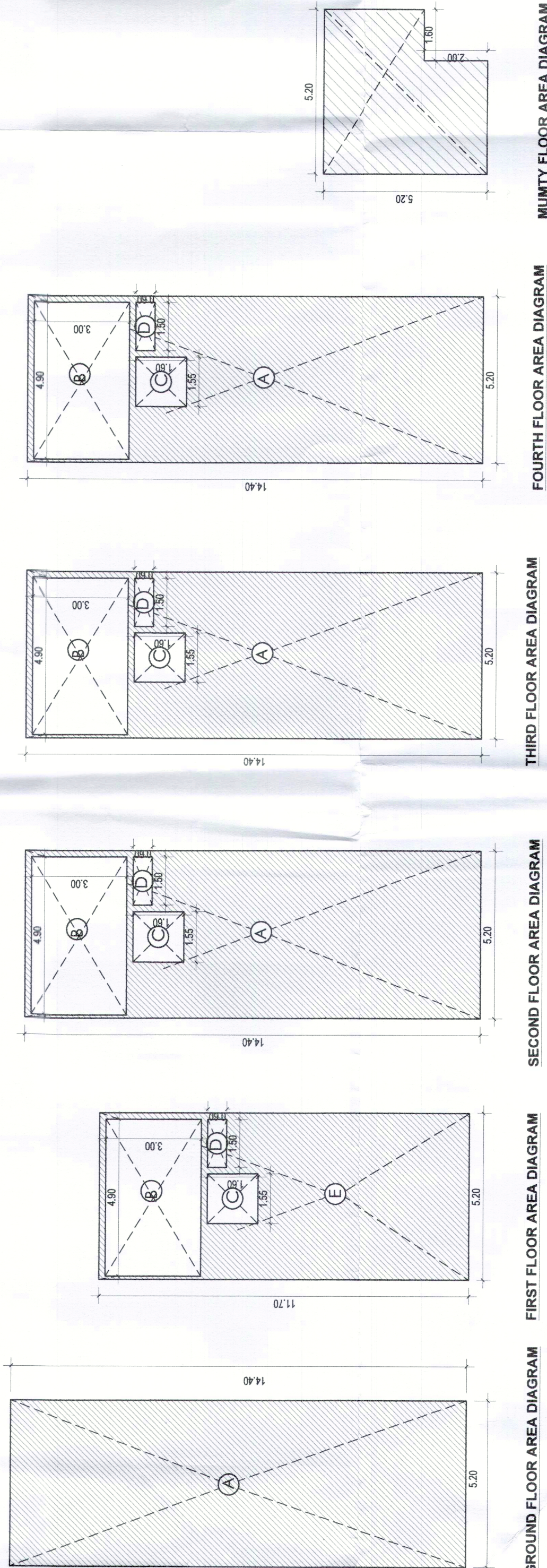
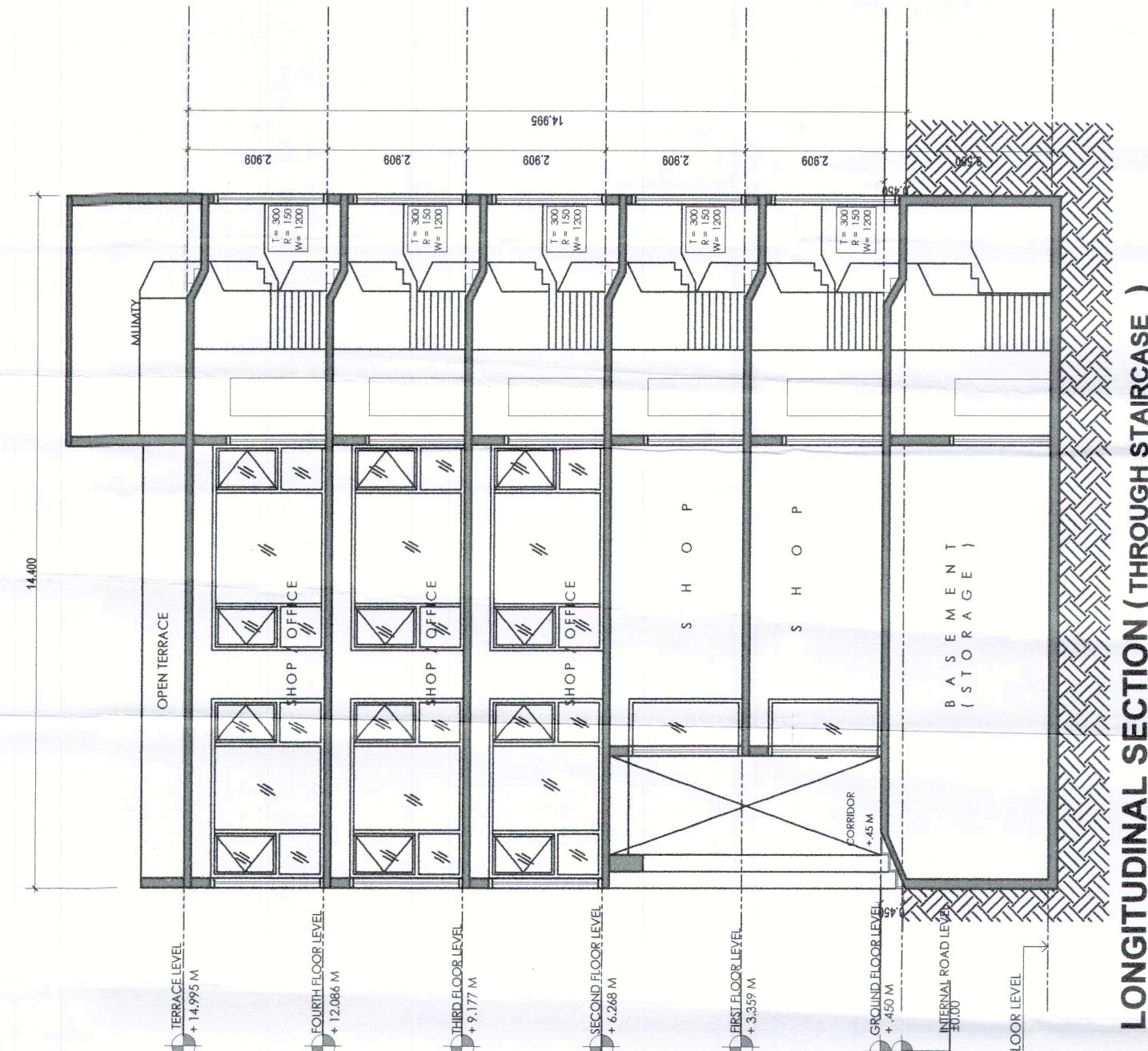
FIRST FLOOR = E - (B + C + D)
 $= (5.2 \times 11.7) - (1.4 \times 9.3) - (1.6 \times 1.55) - (0.6 \times 1.5)$
 $= 60.84 - (14.7 \times 2.48 + 0.9)$
 $= 60.84 - 18.08 - 0.9$
 $= 42.76 \text{ SQM}$

SECOND FLOOR = A - (B + C + D)
 $= (5.2 \times 14.4) - (1.4 \times 9.3) - (1.6 \times 1.55) - (0.6 \times 1.5)$
 $= 74.88 - (14.7 \times 2.48 + 0.9)$
 $= 74.88 - 18.08 - 0.9$
 $= 56.8 \text{ SQM}$

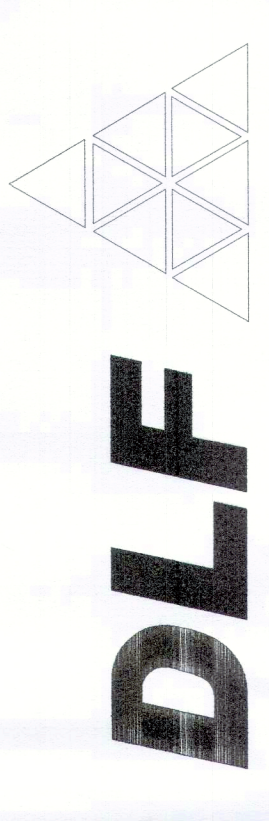
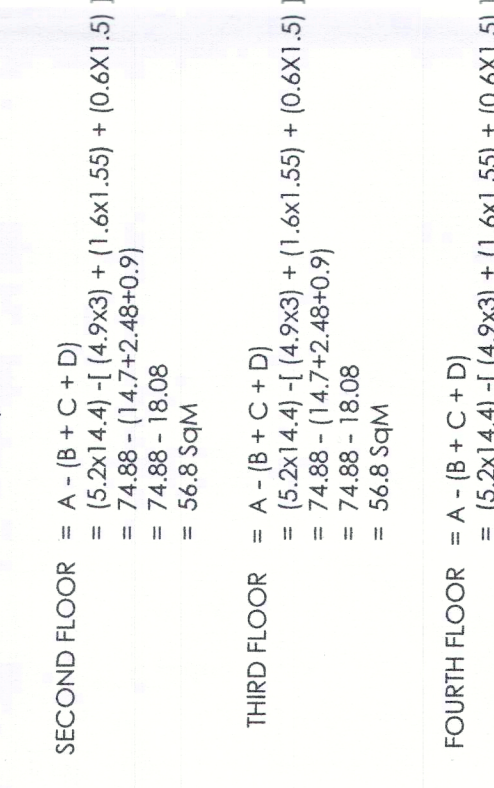
THIRD FLOOR = A - (B + C + D)
 $= (5.2 \times 14.4) - (1.4 \times 9.3) - (1.6 \times 1.55) - (0.6 \times 1.5)$
 $= 74.88 - (14.7 \times 2.48 + 0.9)$
 $= 74.88 - 18.08 - 0.9$
 $= 56.8 \text{ SQM}$

FOURTH FLOOR = A - (B + C + D)
 $= (5.2 \times 14.4) - (1.4 \times 9.3) - (1.6 \times 1.55) - (0.6 \times 1.5)$
 $= 74.88 - (14.7 \times 2.48 + 0.9)$
 $= 74.88 - 18.08 - 0.9$
 $= 56.8 \text{ SQM}$

TOTAL FAR AREA PER PLOT = **288.04 Sqm**



FLOOR	WIDTH (M)	DEPTH (M)	PLOT AREA (SQM)	DEDUCTION (LIFT, STAIRCASE, SHAFT) (SQM)	FAR AREA (SQM)	FAR AREA (SQ YARDS)
GROUND FLOOR	5.20	14.40	74.88		74.88	89.56
FIRST FLOOR	5.20	11.70	60.84	18.08	42.76	51.14
SECOND FLOOR	5.20	14.40	74.88	18.08	56.80	67.93
THIRD FLOOR	5.20	14.40	74.88	18.08	56.80	67.93
FOURTH FLOOR	5.20	14.40	74.88	18.08	56.80	67.93
FAR PER PLOT					288.04	344.50
TOTAL FAR OF THE PLOTS (1 NOS.)					288.04	344.50



DLF HOME DEVELOPERS LTD.

PROJECT TITLE
SCO AT SECTOR 84, GURUGRAM

DATE	REVISION	DESCRIPTION	ISSUES

ARCHITECT:
 A/C P - ASSOCIATES PVT. LTD.
 A-10, Sector 84, Gurugram, G.K. 1
 New Delhi 110048
 Phone : 011 - 26442050

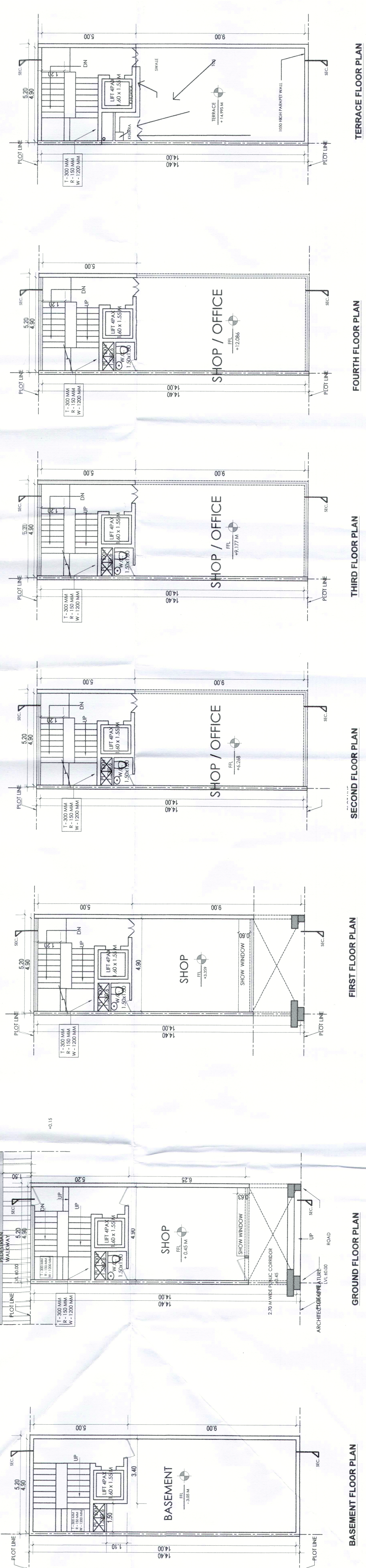
STRUCTURE CONSULTANTS:
 MEF CONSULTANTS:

AUTHORIZED SIGNATORY:- ARCHITECT'S SIGNATURE:

SHEET TITLE
**SCO TYPE D (27)
 PLAN, AREA DIAGRAM, ELEVATIONS**

Document Release Type
SUBMISSION DRAWING

Job No.	
Scale	1:125 ON A1 SHEET
Date	10 DEC, 2021
Drawn by	SD
Checked by	Jsk
DRAWING NUMBER	AR-84-TYPE D-07
Revision No.	



Day No DTCP - 8(64 - XV) DATED: 21-02-2022

(K. MAKEND PANDURANG) MS
 DTCP (HR)

(HITESH SHARMA)
 STP (HO), M
 (K. MAKEND PANDURANG) MS
 DTCP (HR)

(DINESH KUMAR)
 SD (HQ)

(HITESH SHARMA)
 ARCHITECT (HO)

(K. MAKEND PANDURANG) MS
 DTCP (HR)